

## Rotherham Children and Young People's Services

# Assessment of Performance by Every Child Matters Outcome

### 2009/10 Quarter One Report

This report outlines performance at the end of 2009/10 Quarter One against targets, with comparisons against previous performance and where possible statistical neighbour and national data.

It should be read in conjunction with the 'CYPS Performance Monitoring Table – Quarter One 2009/10' (Appendix B) as it includes references throughout the text to the numbering structure within the table.

Please note the following data health warnings;

- The number of indicators which can be reported quarterly is very small for each outcome. This needs to be considered when reviewing any analysis by percentages.
- Comparative data relates to the latest available data and therefore date periods for some indicators may vary. It has been sourced via the DCSF Local Area Interactive Tool (downloaded 7<sup>th</sup> August 2009).

[Data date: 30<sup>th</sup> June 2009]

## Performance Summary – All themes

Number of Indicators:

27

Number of Components:

32

### Performance against Targets

(Comparing this quarter's performance against set targets)

On Target	Interpretation	Being Healthy		Staying Safe		Enjoying & Achieving		Making a Positive Contribution		Achieving Economic Wellbeing		All Themes	
		No	%	No	%	No	%	No	%	No	%	No	%
✓	Has met target	4	66.7%	4	40%	5	83.3%	2	28.6%	2	66.7%	17	53.1%
✘	Has not met target	2	33.3%	6	60%	1	16.7%	3	42.9%	1	33.3%	13	40.6%
- / n/a	No targets set (ie new and/or baseline yr)	0	0%	0	0%	0	0%	2	28.6%	0	0%	2	6.3%
<b>Total Number of Components</b>		<b>6</b>		<b>10</b>		<b>6</b>		<b>7</b>		<b>3</b>		<b>32</b>	

### Direction of Travel (DOT)

(Comparing this quarter performance to previous)

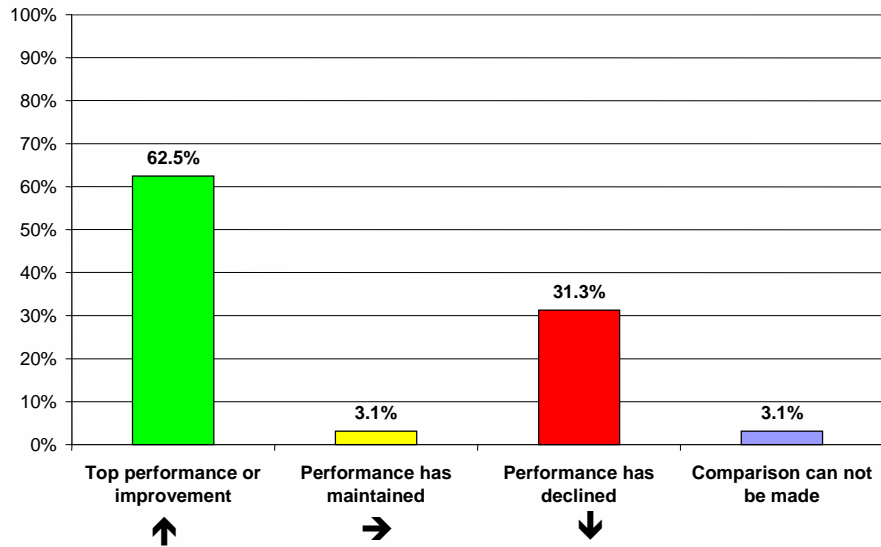
Outturn DOT	Interpretation	Being Healthy		Staying Safe		Enjoying & Achieving		Making a Positive Contribution		Achieving Economic Wellbeing		All Themes	
		No	%	No	%	No	%	No	%	No	%	No	%
↑	Top performance or improvement	5	83.3%	5	50%	6	100%	2	28.6%	2	66.7%	20	62.5%
→	Performance has maintained	0	0%	1	10%	0	0%	0	0%	0	0%	1	3.1%
↓	Performance has declined	1	16.7%	4	40%	0	0%	4	66.7%	1	33.3%	10	31.3%
- / n/a	Comparison can not be made (ie new)	0	0%	0	0%	0	0%	1	14.3%	0	0%	1	3.1%
<b>Total Number of Components</b>		<b>6</b>		<b>10</b>		<b>6</b>		<b>7</b>		<b>3</b>		<b>32</b>	

### Year to Date Performance

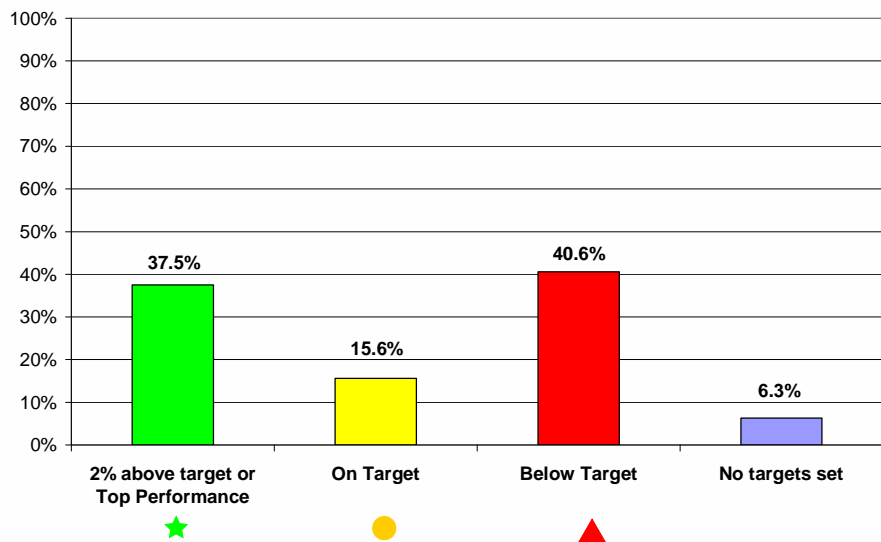
(Judged by corporate monitoring system Performance Plus)

Outturn Perf.	Interpretation	Being Healthy		Staying Safe		Enjoying & Achieving		Making a Positive Contribution		Achieving Economic Wellbeing		All Themes	
		No	%	No	%	No	%	No	%	No	%	No	%
★	2% above target or Top Performance	0	0%	3	30%	5	83.3%	2	28.6%	2	66.7%	12	37.5%
●	On Target	4	66.7%	1	10%	0	0%	0	0%	0	0%	5	15.6%
▲	Below Target	2	33.3%	6	60%	1	16.7%	3	57.1%	1	33.3%	13	40.6%
- / n/a	No targets set (ie new and/or baseline year)	0	66.7%	0	0%	0	0%	2	28.6%	0	0%	2	6.3%
<b>Total Number of Components</b>		<b>6</b>		<b>10</b>		<b>6</b>		<b>7</b>		<b>3</b>		<b>32</b>	

Quarter 1 - 2009/10  
**Direction of Travel - All Themes**



Quarter 1 - 2009/10  
**Performance Year to Date - All Themes**



## Notes on overall performance

- Across all themes there is a positive direction of travel with 62.5% of indicators improving or maintaining top performance since 2008/09 Outturn.
- There are still too many indicators not meeting targets (40.6%). Almost half of these are within the Staying Safe theme.
- Although there are significant gaps in benchmarking data. Where comparative data is available over half of the measures are above Statistical Neighbour current published data.
- Please note the number of indicators which can currently be quarterly reported are low therefore percentage analysis by theme could be skewed.

## Areas of Success

### ▪ **Being Healthy**

The majority of indicator components in Being Healthy outcome have improved since the 2008/09 outturn (83.3%) and are currently on target.

### ▪ **Staying Safe**

All Child Protection indicators (No. 10 – NI65, No. 11 – NI 66 and No 12 – NI67) are improving and performing above target. In addition the latest available comparative data shows that we are above Statistical Neighbour and National Averages for all three measures.

Looked After Children cases reviewed in timescales (no. 11 – NI66) has improved significantly on the 2008/09 position from 85.4% to 93.3% and is now on target. This indicator however remains vulnerable if the number of Looked After Children continues to rise.

### ▪ **Enjoying and Achieving**

Four of the six quarterly reported indicator components are at top performance. These are; 'Number of Schools in Special measures' (No 17 – NI 89a), 'Time taken for school to come out of an Ofsted Category of concern' (No 17 – NI89b), Statements of SEN issued within timescales Excluding and Including Exceptions (No 18 – NI 103 a & b).

### ▪ **Making a Positive Contribution**

All our young people in the young offenders cohort are currently deemed as accessing suitable accommodation (No 20 – NI 46) and local data demonstrates that the number of first time entrants to the Youth Justice System is continuing to fall and better than its LAA milestone target, (No 22 – NI 111).

### ▪ **Achieving Economic Wellbeing**

All Care Leavers are currently living in suitable accommodation (No 26 – NI 147) and 75% are accessing in employment, education or training, (please note this is a very small cohort at this quarter we have only 4 young people eligible for these indicators.)

## Areas of Under-performance

### ▪ **Being Healthy**

Due to seasonal issues Secondary School take up of school meals has fallen by 4% taking our comparative position even further below statistical neighbour and national averages.

### ▪ **Staying Safe**

There have been some significant declines in performance in a number of children's social care national indicators since the 2008/09 year end position. Including a 6.8% decrease in initial assessments within timescales to 71% (No 5 – NI 59) and a 24.9% decrease in core assessments with timescales to 60% (No 6 – NI 60) and a 6.5% decrease for referrals progressing to initial assessment (No 13 – NI 68).

### ▪ **Enjoying and Achieving**

Secondary schools judged as having good or outstanding standards of behaviour, although recently improving, is currently at risk of not meeting it's year end target. This indicator relies on the school inspection cycle which is determined by Ofsted not the authority. Therefore if none of the four remaining schools outside this standard receive an inspection there will be no further improvement this year.

### ▪ **Making a Positive Contribution**

To ensure alignment to Ofsted's Comprehensive Area Assessment (CAA) arrangements for Children and Young People Services indicators relating to sexual health and conceptions have now moved from Being Healthy to Making a Positive Contribution. Unfortunately both related

measures, Under 18 Conceptions (No 23 – NI112) and Chlamydia Screening (No 24 – NI113) are both off target and have a downward direction of travel.

Similarly all Youth Offending Measures are now also within this outcome theme including the proportion in suitable education, employment or training (No 21 – NI 45) which has dropped by almost 6% on the 2008/09 outturn position to 66.7%. This is in part due to a change in calculation definition but also the fall in first time entrants is having a perverse affect on this measures as the young people within the cohort are those who are more entrenched in the system and therefore are harder to engage. Convictions, (No 19 – NI 43), have increased to 16.1% of the Youth Offending population which is significantly above the outturn position of 9.7% and the statistical neighbour and national averages of 5.9%. A full performance report and action plan is in production by the Youth Offending Service for completion in September 09.

▪ **Achieving Economic Wellbeing**

The proportion of young people not in education, employment or training, (No 25 – NI 117), has increased since the excellent 2008/09 outturn position from 6.9% to 8.1%. This is in part due to usual seasonal fluctuations but it is also linked to the national economic downturn meeting. It will be a challenge to meet the 2010/11 LAA Stretch target of 7.1%.

**Performance Clinics**

At every quarter all indicators which are both ‘off target’ and have a ‘downward Direction of Travel’ are considered for clinics. Performance Management Officers review the data, comments and any discussions with PI managers to make informed recommendations. These are then approved or otherwise by CYPS Cabinet Member & Advisers. The Cabinet Member for Children and Young People’s Services can also call clinics on particular issues of interest which are not monitored by National Indicators ie Foster Carers. Adhoc Performance Clinics and Turning the Curve workshops have also been held on JLT request.

▪ **Previous Clinics**

At 2008/09 outturn the following indicators were chosen for a clinic

Ref.	Indicator	Notes
NI 55	Obesity at Reception Year.	Turning the Curve workshop to be arranged Autumn 2009 to look at both indicators.
NI 56	Obesity at Year 6.	
NI 148	Care Leavers – EET	To be held 3 <sup>rd</sup> September 2009. Issues arising to be reported within 2 <sup>nd</sup> Quarter report.

▪ **Future Clinics**

Of the ten indicators with a downward direction of travel nine are also underperforming against targets. The following table summarises these and gives performance officer recommendations for future clinics with rationale.

No.	Ref.	Indicator	Clinic Recommended	Rationale
1 b	NI 52 b	Take up of School Meals - Secondary	No	Downturn due to seasonal fluctuations. Progress to be assessed in new term.
5	NI 59	Initial Assessments within timescales	No	Issues are being addressed following the Ofsted inspection of Contact Referral and Assessment in August. Review in Quarter 2.
6	NI 60	Core Assessments within timescales	No	Issues are being addressed following the Ofsted inspection of Contact Referral and Assessment in August. Review in Quarter 2.

No.	Ref.	Indicator	Clinic Recommended	Rationale
7	NI 61	Timeliness of LAC placements following decision to Adopt	No	The calculation for this indicator is currently being queried with central office. A clinic was held for adoptions in March 2009. It is recommended that a performance clinic update is held after 2 <sup>nd</sup> quarter report once definition is clarified and progress can accurately be assessed.
13	NI 68	% referrals to progressing to initial assessments	No	Issues are being addressed following the Ofsted inspection of Contact Referral and Assessment in August. Review in Quarter 2.
21	NI 45	Young Offenders EET	No	Change in calculation definition but also the fall in first time entrants is having a perverse affect on this measures. If performance does not improve in Quarter 2 a clinic will be recommended.
23	NI 112	Under 18 Conceptions	No	Subject to a Be Healthy themed performance management group in September. Review in Quarter 2.
24 a	NI 113 a	Prevalence of Chlamydia - coverage	No	Subject to a Be Healthy themed performance management group in September. Review in Quarter 2.
25	NI 117	% NEET	No	Only missed target by 0.1% but performance to be closely monitored to assess impact of economic downturn. This may be called for a clinic alongside the Young Offenders EET measure at Quarter 2.

## CYPS Performance Monitoring Table – Quarter One 2009/10

### GLOSSARY

Detailed below is explanation regarding the different items within the following outturn performance table

<b>No</b>	Number on indicator as shown in this table. Added to aid discussion and referencing.	
<b>Definition</b>	The name of the indicator.	
<b>Ref</b>	the official reference number. 'NI' = National Indicator, 'BV' = Best Value performance indicator, LAA and LPI = Local stretch indicators within the 2006-09 Local Area Agreement	
<b>Good Perf</b>	The direction the performance needs to travel to improve	
<b>08/09 Actual</b>	Previous year's performance	
<b>Q1 Target</b>	Level of achievement the service wished to reach within this quarter (can be the same or an increment towards the year end target)	
<b>Q1 Perf</b>	Level of achievement the service wished to reach in this quarter	
<b>Q1 On Target</b>	Has the target been achieved? ✓ = Yes, ✗ = No, n/a / - = no targets set so unable to assess	
<b>Q1 DOT</b>	Direction of travel of performance compared to previous quarter ↑ = better than last year or top performance, ↓ = worse than last year, → = same as last year, - / n/a = comparison can't be made	
<b>Year To Date</b>	Year To Date. Performance assessment by corporate monitoring system Performance Plus as at December 2008 ★ Green Star - Above Target or top performance, ● Amber Circle -On Target, ▲ Red triangle - Below target	
<b>Latest Comparative Data (Q1 comparative position)</b>	<b>Stat. Neigh.</b>	The latest average for our Statistical Neighbour group. Used by Ofsted to assess performance to be a good authority we need to have the majority inline or better than this average. The information in brackets assesses our performance against this average.
	<b>National</b>	The latest National average. Used by Ofsted to assess performance to be a good authority we need to have the majority inline or better than this average. The information in brackets assesses our performance against this average.
<b>Comments</b>	If necessary further explanation of performance is summarised here. Examples include details of external influences, seasonal trends or impact of action. This is supplied by indicator managers and approved by directors, additional notes from Performance and Data team may be added to the comments column to aid explanation.	
<b>09/10 Target</b>	The current year end targets set by indicator managers.	
<b>10/11 Target</b>		
<b>11/12 Target</b>		

### Abbreviations within the table

NI	National Indicator	LPI	Local Performance Indicator	<b>Comparative Data Position</b>	
PI	Performance Indicator	LAC	Looked after Children	(Above)	Our current performance is better
BV	Best Value Performance Indicator	SEN	Special Educational Needs	(Inline)	Our current performance is broadly the
LAA	Local Area Agreement	PAF	Performance Assessment Framework	(Below)	Our current performance is worse

CYPS Performance Monitoring Table – Quarter One 2009/10

No	Definition	Ref	Good Perf	08/09 Actual	Q1 Target	Q1 Perf	Q1 On Target	Q1 DOT	Year to Date	Latest Comparative Data (Q1 comparative position)		Comments	09/10 Target	10/11 Target	11/12 Target
										Stat. Neigh.	National				
<b>BEING HEALTHY</b>															
1	Take up of school lunches Primary Secondary [Ron Parry - RMBC]	NI 52 a b	HIGH HIGH	40.5% 34.2%	40.5% 34.2%	41.07% 30.20%	✓ ✗	↑ ↓	● ▲	48.07% (Below) 44.75% (Below)	- -	Primary sector has increased meals per day against 12 months previous. Secondary School Take up traditionally low at this time of year but increased due to Easter closure when last day of term is very low take up.	40.5% 34.2%	41.9% 34.8%	42.7% 35.5%
2	Prevalence of breastfeeding at 6 – 8 weeks from birth Prevalence Coverage [Gill Harrison - NHS Rotherham]	NI 53 a b	HIGH HIGH	24% 77%	28% 90%	28.0% 89.0%	✓ ✗	↑ ↑	● ▲	29.03% (Below) -	50.0% (Below) -	Last year's target not achieved. A number of NHS performance clinics, events, letters, audits and high level meetings have taken place to address issues. At quarter one on track to meet year end targets.	28% 90%	28% 95%	30% 95%
3	Emotional and behavioural health of looked after children [Sue May - RMBC]	NI 58	LOW	14.5	14.0	13.8	✓	↑	●	-	-	The LAAC Support Team is continuing to monitor the emotional health and wellbeing of Looked After Children. The program comprises of sending out annual SDQ's. The business support officer within the team is notified at the beginning of each month when a child has: a. been in care for a period of six months, b. When a child's birthday falls within that month, c. There is also a process to activate when SDQ's have not been returned with two months  The LAAC Support team is continuing to provide support to foster carers and children within the care system in supporting Looked After children. This includes liaising with other CAMHS services. There are also plans to deliver training across locality teams to raise aware of the SDQ and its use in practice There are discussion regarding ways to link SDQ with LAC Statutory health assessments in the future	14.0	13.5	13.0
4	% schools achieving Healthy School Status in accordance with the 2005 NHSS criteria. LAA 2006-09 [Liz Galliver - RMBC]	LAA BH5	HIGH	84.5%	90.0%	90.7%	✓	↑	●	-	-	There are two more schools which have self assessed as achieving Healthy Schools status. We are just awaiting confirmation from the Quality Assurance Group before this can be confirmed and transferred to the national data base. We are still on target to get another four schools to achieve accreditation and so meet the 95% target	95.0%	-	-
<b>STAYING SAFE</b>															
5	Percentage of initial assessments for children's social care carried out within 7 working days of referral [Pam Allen - RMBC]	NI 59	HIGH	77.8%	80.0%	71.0%	✗	↓	▲	68.2% (Above)	71% (Inline)	Due to staffing vacancy factor this target is difficult to achieve in this period	80.0%	81.0%	82.0%
6	Percentage of core assessments for children's social care that were carried out within 35 working days of their commencement [Pam Allen - RMBC]	NI 60	HIGH	84.9%	86.0%	60.0%	✗	↓	▲	79.2% (Below)	80.0% (Below)	Due to staffing vacancy factor this target is difficult to achieve in this period	86.5%	87.0%	87.5%
7	Timeliness of placements of looked after children for adoption following an agency decision that the child should be placed for adoption [Sue May - RMBC]	NI 61	HIGH	87.5%	83.0%	25% (see comments)	✗	↓	▲	77.88% (Below)	76.30% (Below)	< Performance & Data Team > This indicator is having it's guidance queried and the quarterly figure may not be accurate.	83.0%	85.0%	86.0%
8	Stability of placements of looked after children: number of placements [Sue May - RMBC]	NI 62	LOW	13.3%	11.0%	12.2%	✗	↑	▲	11.53% (Below)	11.40% (Below)	Improvement plan in place to: increase placement availability; improve the quality of placements; and enhance support to placements.	11.0%	10.5%	10.0%
9	Child protection plans lasting 2 years or more [Annie Redmond - RMBC]	NI 64	LOW	4.8%	4.5%	3.8%	✓	↑	★	4.56% (Above)	5.00 (Above)	Performance in this area continues to improve in line with projected targets.	4.5%	4.0%	3.5%
10	Percentage of children becoming the subject of a Child Protection Plan for a second or subsequent time [Annie Redmond - RMBC]	NI 65	LOW	10.6%	11.0%	10.5%	✓	↑	★	14.4% (Above)	14.0% (Above)	Performance in the area continues to be monitored to ensure compliance with regulatory requirements and Performance Indicator	11.0%	11.0%	10.5%
11	Looked After Children cases which were reviewed within required timescales [Annie Redmond - RMBC]	NI 66	HIGH	85.4%	92.0%	93.3%	✓	↑	●	87.3% (Above)	85.3% (Above)	Performance during the first quarter of the reporting period has improved. Performance in this area will continue to be monitored but remains vulnerable if the numbers of Looked After young people continues to increase.	92.0%	93.0%	94.0%
12	Percentage of child protection cases which were reviewed within required timescales [Annie Redmond - RMBC]	NI 67	HIGH	100%	100%	100%	✓	↑	★	98.6% (Above)	99.0% (Above)	Performance in this area continues to be maintained	100%	100%	100%
13	Percentage of referrals to children's social care going on to initial assessment [Pam Allen - RMBC]	NI 68	HIGH	57.60%	55.0%	51.1%	✗	↓	▲	61.6% (Below)	59% (Below)	Thresholds are inconsistent . An audit is being undertaken to examine activity	55.0%	57.0%	60.0%
14	Children who have run away from home/care overnight [Morri McDermott - RMBC]	NI 71	HIGH	14	15	14	✗	→	▲	-	-	To achieve the target it is important that all partners are working together, to the same protocols and at the same pace. The driving protocol is a regional one and there are some issues to resolve region wise.	15	15	-
<b>ENJOYING AND ACHIEVING</b>															
15	Number of Extended Schools [Helen Shaw - RMBC]	NI 88	HIGH	60%	75%	85%	✓	↑	★	-	-	As part of the support and challenge function of the TDA the target has been increased at each of the last 3 face to face meetings. The target for September 09 has been increased to 85% from 80%. It is expected that the target will be further increased at our next meeting scheduled for November 25th.	85%	100%	100%
16	Secondary schools judged as having good or outstanding standards of behaviour [Katy Edmondson - RMBC]	NI 86	HIGH	69%	80%	75%	✗	↑	▲	67.67% (Above)	76.10% (Below)	One school re-inspected after the 3 year cycle has improved behaviour from satisfactory to good, increasing the performance for this indicator. However, achieving the target does depend on the number of schools inspected. This is determined by Ofsted rather than the LA.	85%	90%	100%



										Latest Comparative Data (Q1 comparative position)					
No	Definition	Ref	Good Perf	08/09 Actual	Q1 Target	Q1 Perf	Q1 On Target	Q1 DOT	Year to Date	Stat. Neigh.	National	Comments	09/10 Target	10/11 Target	11/12 Target
17	Reduction of number of schools judged as requiring special measures and improvement in time taken to come out of the category	NI 89													
	Number	a	LOW	0	0	0	✓	↑	★	-	-	There has been no school in Special measures since December 2006. This is a major area of success for the LA and schools	0	0	0
	Time [David Light - RMBC]	b	LOW	0	0	0	✓	↑	★	-	-		0	0	0
18	Special Educational Needs – statements issued within 26 weeks	NI 103													
	Excluding exceptions	a	HIGH	100%	95.0%	100.00%	✓	↑	★	-	-	103a) Of the 25 total number of statements issued this quarter, if we exclude exceptions, 1 was issued within 26 weeks	95.0%	95%	95%
	Including exceptions [Helen Barre - RMBC]	b	HIGH	95.90%	90.0%	100%	✓	↑	★	-	-	103b) Of the 25 final statements issued this quarter, all were issued within 26 weeks. Whilst BVPI targets have been met appropriately, the number of exceptions is very high and we would seek to reduce this during the coming quarters.	90.0%	92%	94%
<b>MAKING A POSITIVE CONTRIBUTION</b>															
19	Young people within the Youth Justice System receiving a conviction in court who are sentenced to custody [Paul Grimwood]	NI 43	LOW	9.7%	-	16.1%	-	↓	-	5.91% (Below)	5.9% (Below)	Measure affected by an increase in custody cases (including an increase in serious cases). Also a significant reduction in the number of court disposals. Full performance report with action plan to be completed for September 09	-	5%	-
20	Young offenders access to suitable accommodation [Paul Grimwood]	NI 46	HIGH	97.6%	97.9%	100%	✓	↑	★	69.49% (Above)	69.3% (Above)	All relevant young people deemed to be living in suitable accommodation			
21	Young offenders engagement in suitable education, employment or training [Paul Grimwood]	NI 45	HIGH	72.6%	75.6%	66.7%	✘	↓	▲	69.49% (Below)	69.3% (Below)	There are a number of factors accounting for the reduction in performance during this period. Rotherham's sole provider for Training and Employment stopped taking on new places, due to funding problems. The guidance from the Youth Justice Board for counting ETE has changed and we no longer benefit from counting 50% of those in 16-24 hrs band. (We were previously able to record reduced hours, but are now only allowed to return those with 0hrs or 25 hours or more). The new Connexions PA whilst established in post was unable to pick up on some custody leavers. Finally, as a result of a reduction in the numbers of first time entrants, those young people receiving final warnings, who are less entrenched in offending and who are more likely to be in some form of ETE, continue to decrease, with a perverse effect on this target. The introduction of a new government initiative (triage) is likely to reduce this final warning population further in the coming quarters.	75.6%	78.0%	
22	First time entrants to the Youth Justice System aged 10-17 LAA [Paul Grimwood]	NI 111	LOW	374	133	82	✓	↑	★	-	-	FTE figure for the first quarter of 2009/10 shows a reduction against the Qtr 1 figure for 2008/09 of 15 or 15.46%. Quarter 1 is also less than the expected target figure for the quarter. Local data used to calculate therefore may ultimately differ from that published by DCSF/PNC due to issues with quality of PNC data	535	514	
23	Reduction in the number of under 18 conceptions per 1000 females aged 15-17 compared with 1998 baseline LAA 2008-11 [Melanie Simmons - NHS Rotherham]	NI 112	LOW	-10.5% (rate 50.7)	-38%	-9.9%	✘	↓	▲	rate 53.94 (Above)	rate 41.68 (Below)	Latest forecast under 18 conception data made available in July 2009 for 2008 period. Rotherham is not meeting the targets required to achieve the 2010 target of a 50% reduction in under 18 conceptions according to current trajectories, 2006 was a difficult year seeing an increase in rates and numbers. Official under 18 conception rates are provided by the DCSF with a time delay.	-39%	-	-
24	Prevalence of Chlamydia in under 24 year olds	NI 113													
	Coverage	a	HIGH	19.7%	6.3%	4.3%	✘	↓	▲	-	-	Central guidance continues to measure the screening rate in 2009/10 as a proxy for Chlamydia prevalence. The target for screening is 25% in 2009/10 and 35% in 2010/11. For quarter 1 we have used ¼ of the annual screening rate of 25% as the target. This may be adjusted in future quarters to reflect a building up of screening throughout the year.	17.0%	17%	-
	Prevalence [Mike Brown - NHS Rotherham]	b	LOW	-	-	-	-	-	-	-	-		-	-	-
<b>ACHIEVING ECONOMIC WELLBEING</b>															
25	16 to 18 year olds who are not in education, training or employment (NEET) [Karen Borthwick - RMBC]	NI 117	LOW	6.9%	8.0%	8.1%	✘	↓	▲	8.56% (Above)	6.70% (Below)	Current position of NEET is in line with cyclical fluctuations caused by reducing cohort number but there has been an increased rise in number of NEET young people due to the economic downturn. May 2009 NEET stood at 8.6% representing a reduction on the position last year May 2008 NEET of 8.9%. Not Known as of May 2009 stood at 4.8%	8.0%	7.10%	-
												Three month rolling average validated figures for March to May 2009 were 8.1% NEET representing a 16.9% reduction on the position (9.7%) over the same period last year. We are still on target to achieve the revised NEET target out turn			
26	Care leavers in suitable accommodation [Sue May - RMBC]	NI 147	HIGH	94.7%	95.0%	100.0%	✓	↑	★	87.88% (Above)	88.4% (Above)	All Care Leavers are currently in suitable accommodation	95.0%	92%	-
27	Care leavers in employment, education or training [Sue May - RMBC]	NI 148	HIGH	55.3%	65.0%	75.0%	✓	↑	★	53.70% (Above)	64.70% (Above)	The cohort of 19 year old care leavers is closely monitored and targeted support is given. A background of rising unemployment will impact negatively; a performance clinic has been arranged.	65.0%	70%	-